



Breakthrough science. Breakthrough medicine.®

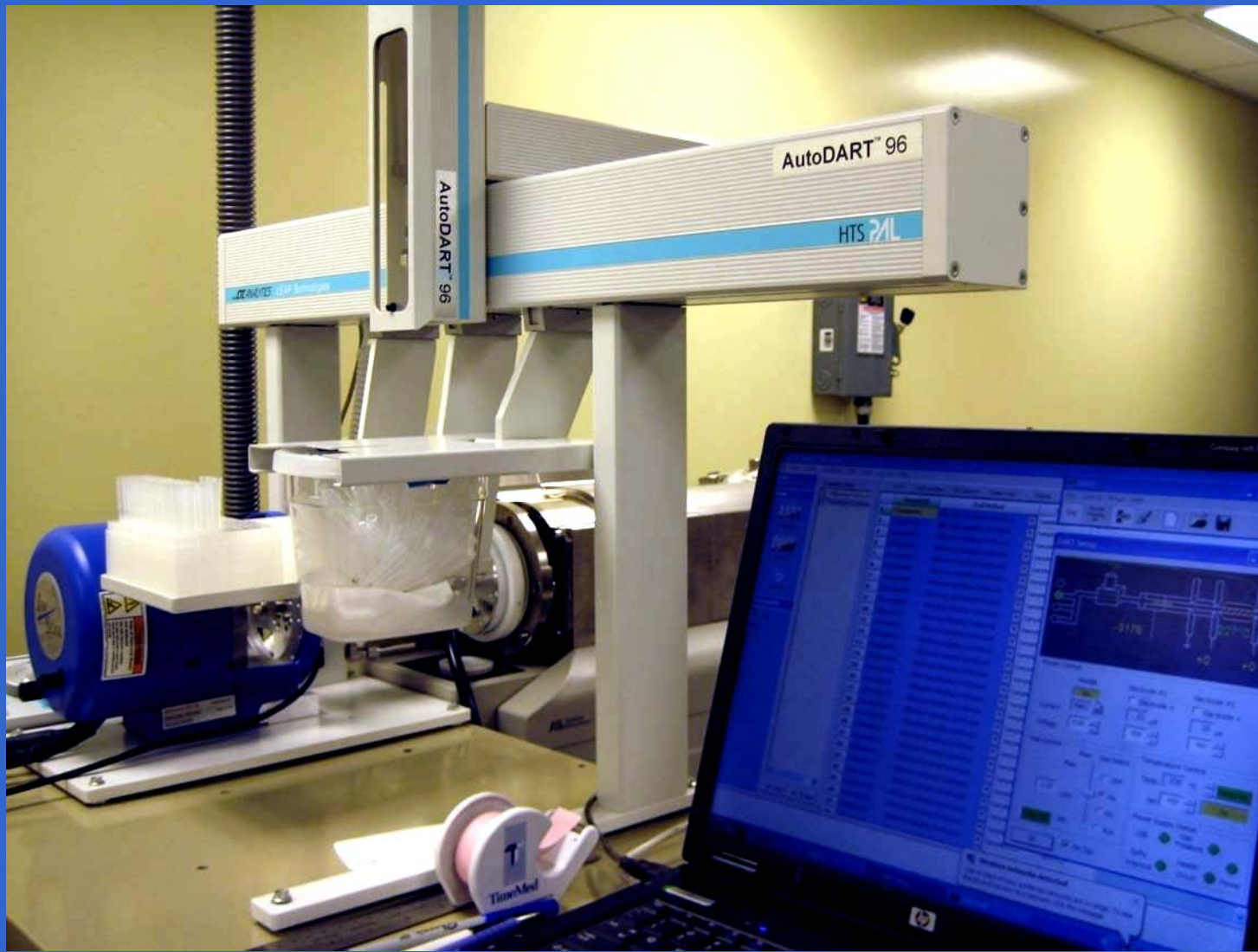
Improving the Reproducibility and Practicability of DART for the Direct Quantification of Drugs in Biological Fluids

Shaoxia Yu¹, Elizabeth Crawford² Joe Tice²,
Brian Musselman^{2*}, Jing-Tao Wu^{1*}
Millennium Pharmaceuticals, Inc¹,
Cambridge, MA 02139
Ion Sense, Inc². Saugus, MA

Outline

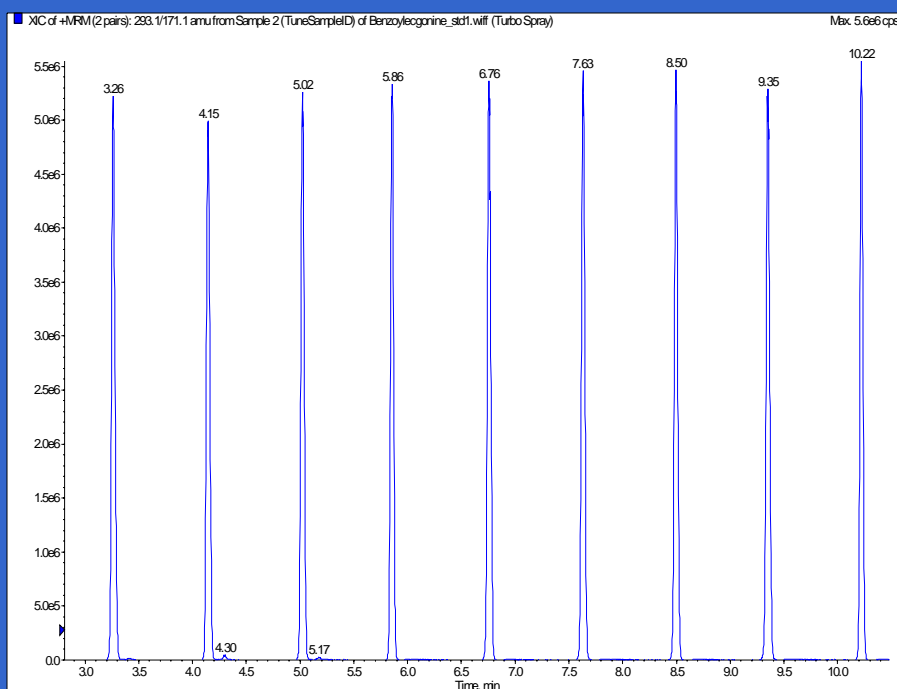
- Instrumentation Improvements and Performance
- Evaluation for Bioanalysis
- Applications for in vivo and in vitro ADME Studies
- Conclusions

Instrumentation Improvements and Performance



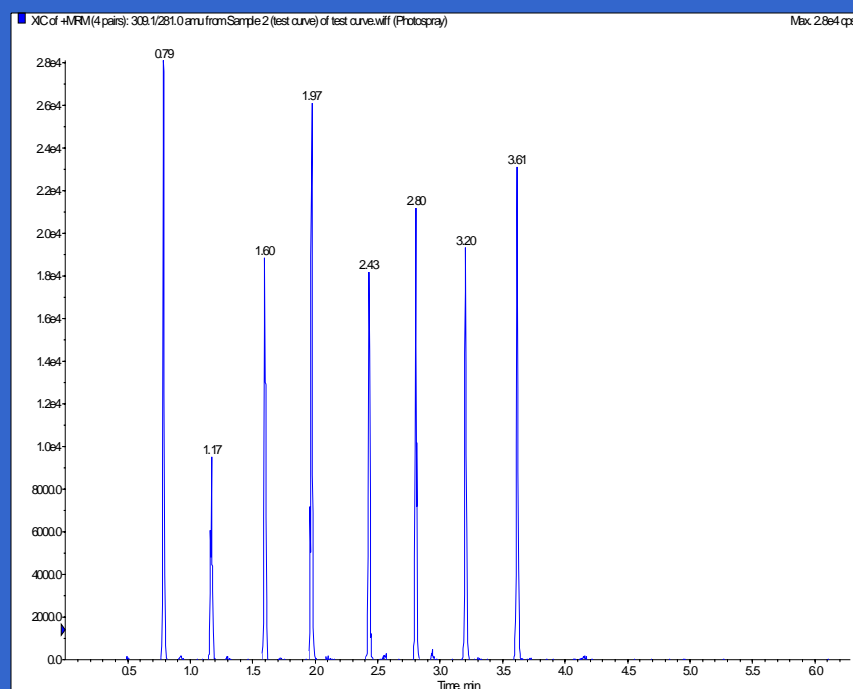
Reproducibility Significantly Improved by Using Automation

Now

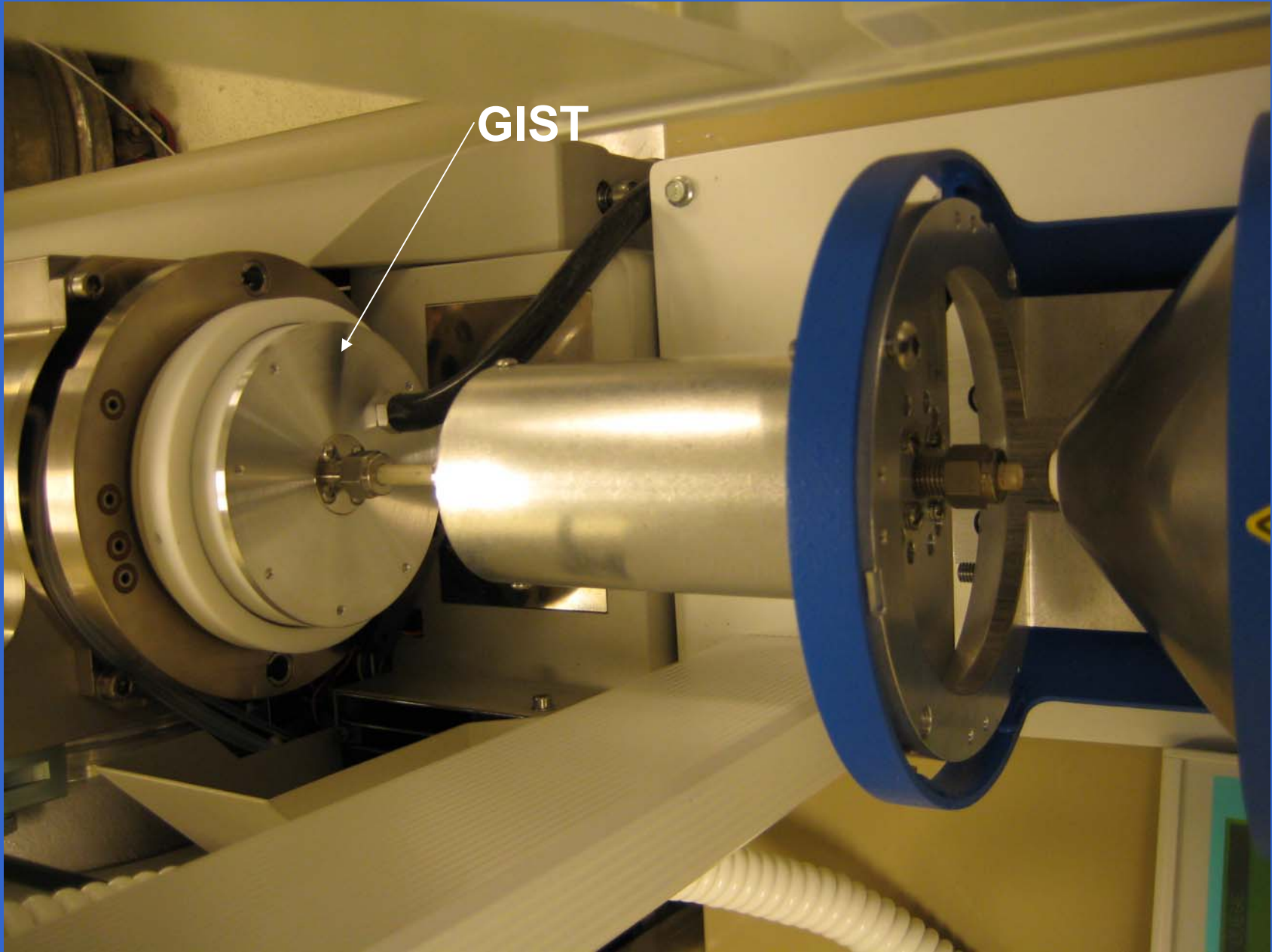


N=9, CV=3.1%

Before



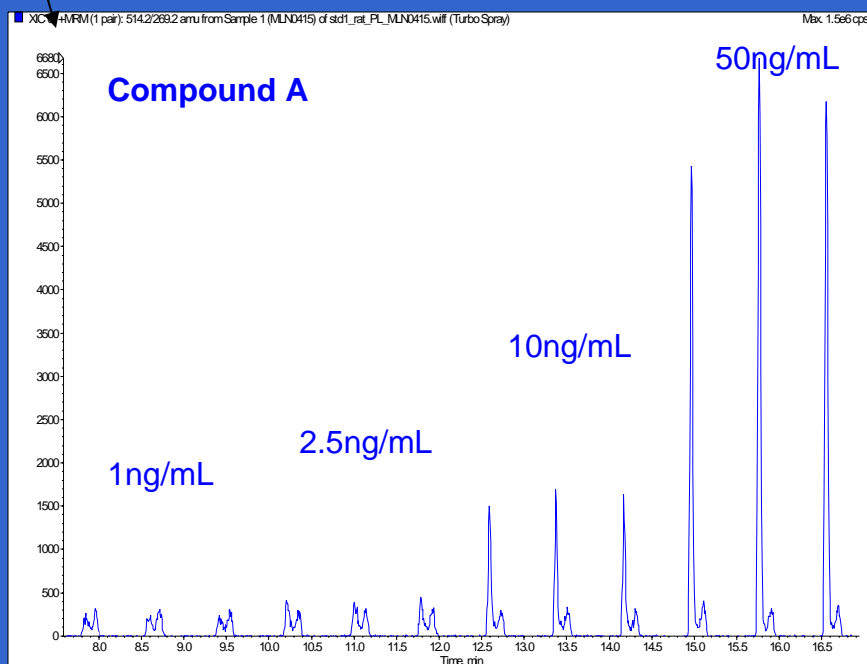
N=8 CV=27.7%



Sensitivity Increased by Using GIST

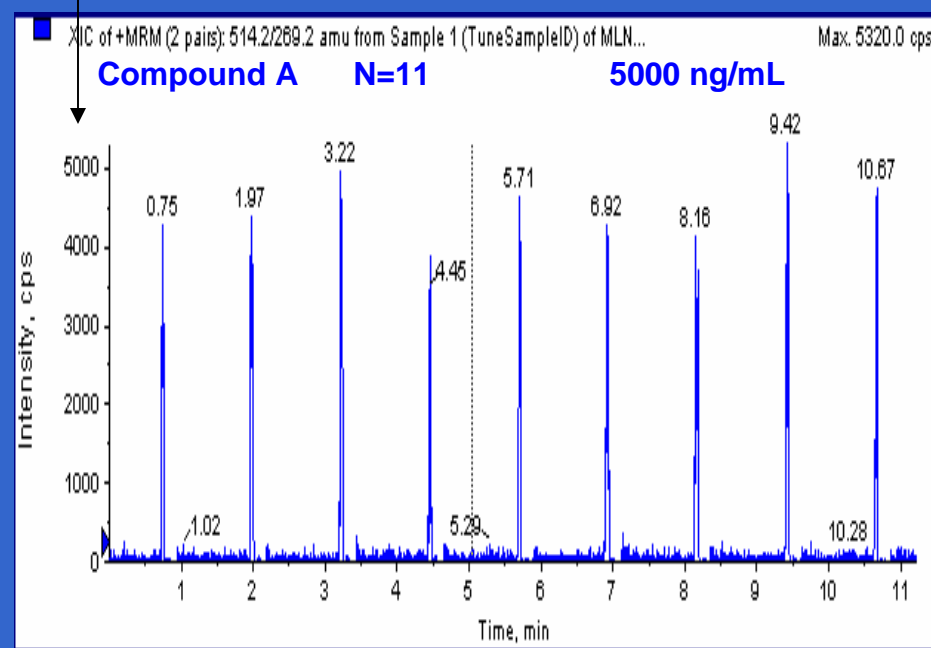
6680

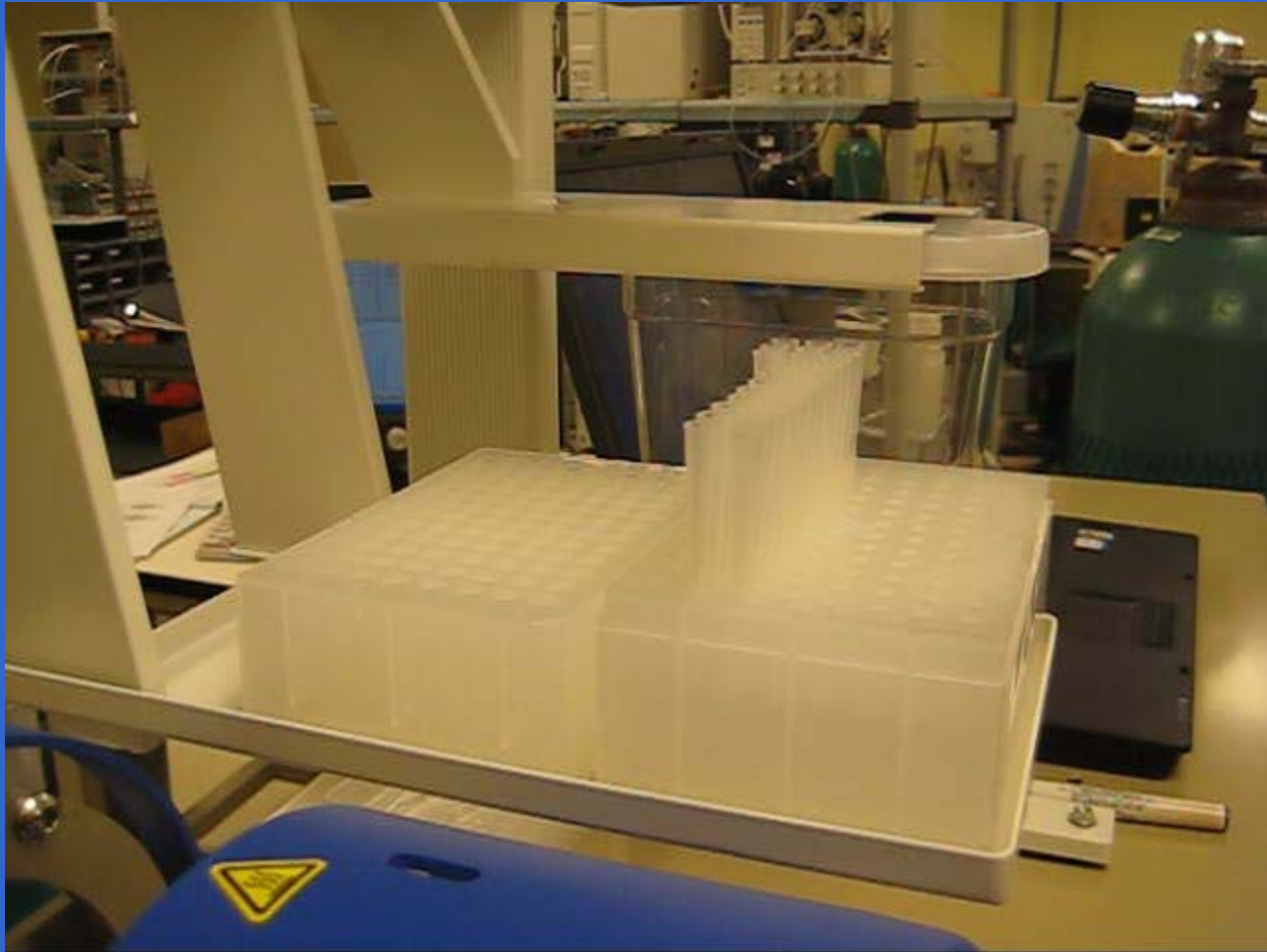
W/GIST



5000

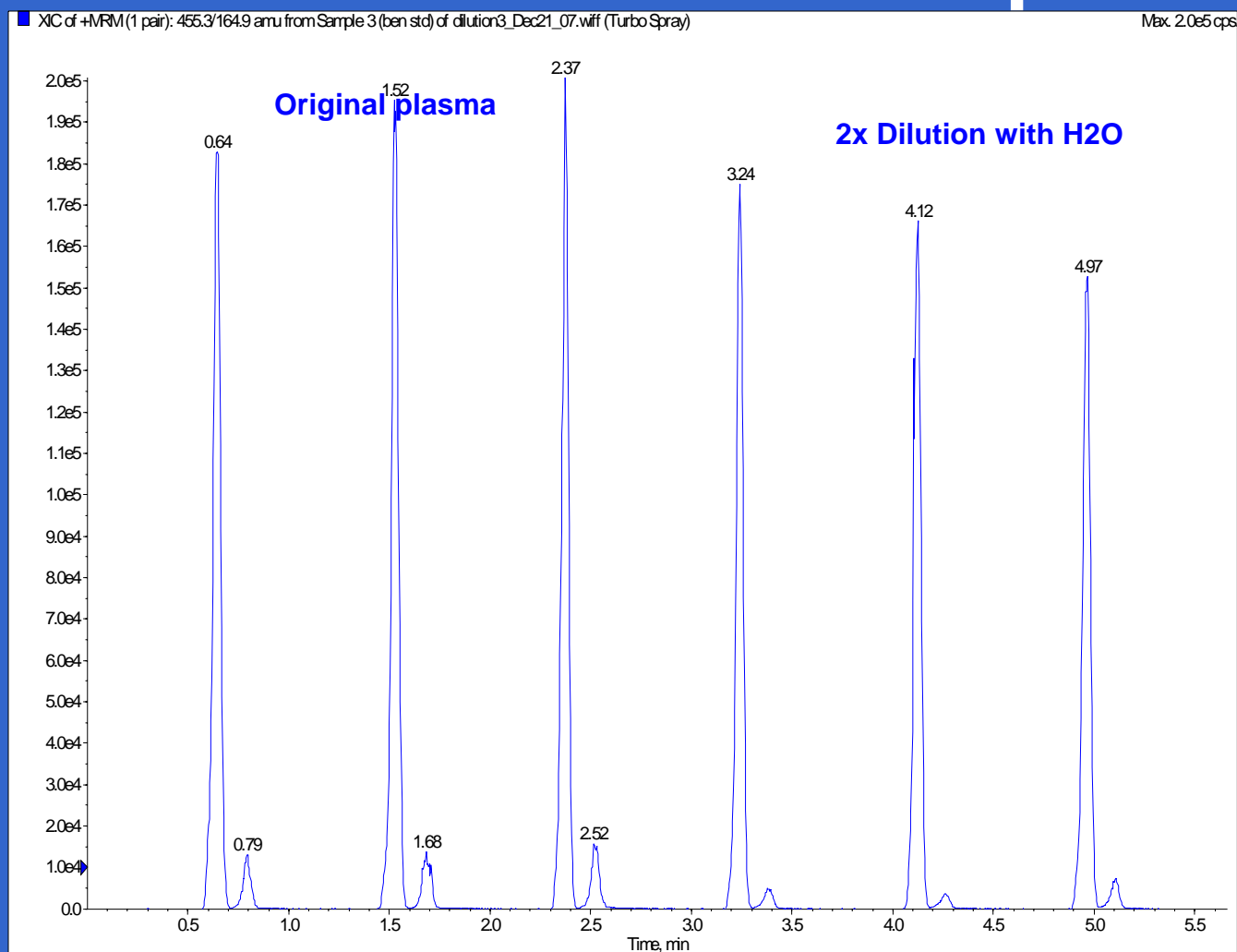
W/out GIST





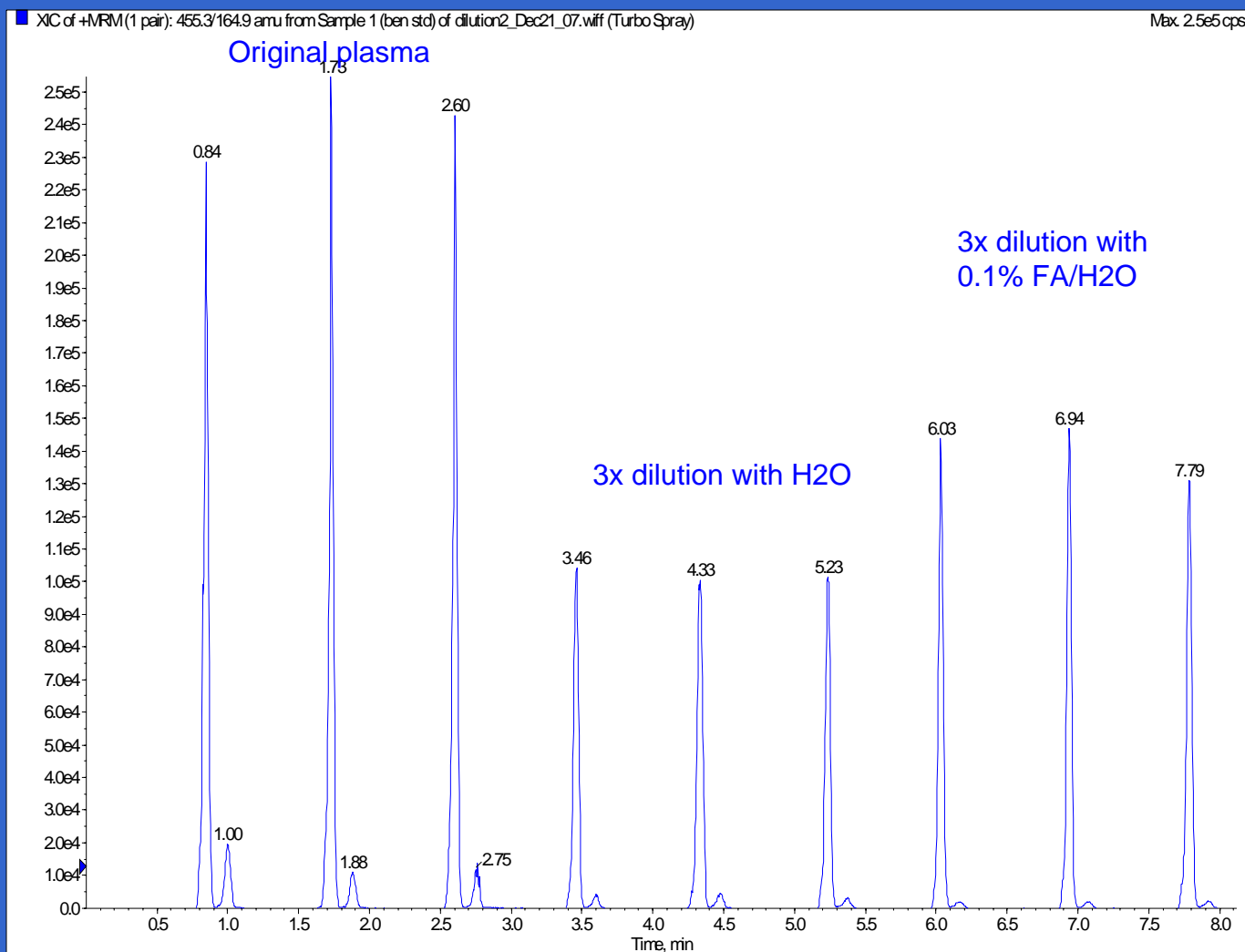
Evaluation for Bioanalysis

Dilution Effect of Verapamil



Signal reduction due to the dilution is canceled out by less matrix effect. This is particularly useful when sample is in low volume.

Dilution Effect of Verapamil



Further dilution is not beneficial for sensitivity

Matrix Effects in rat plasma

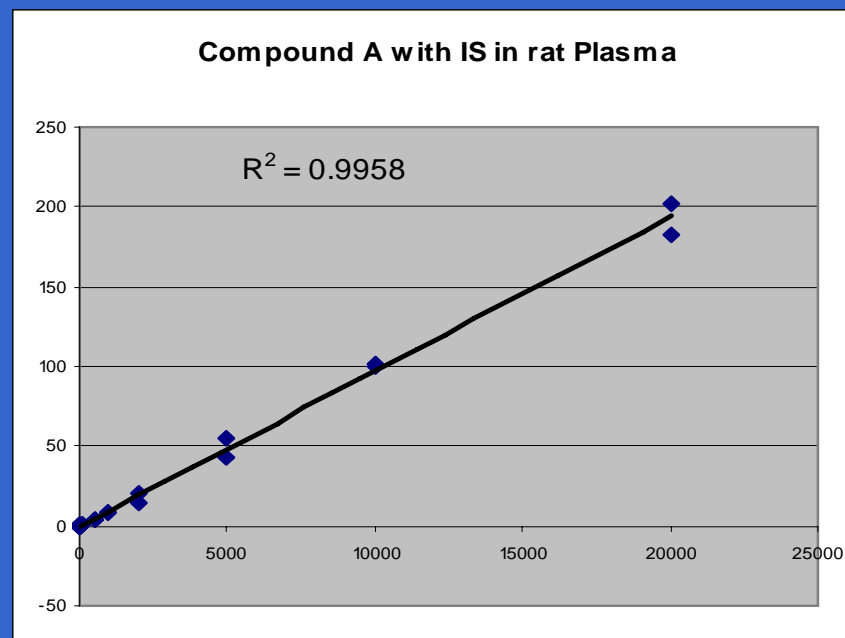
	Methyacina	Verapamil	Alprozolam	Praparacaine	Compound E
Plasma	6.9%	37.1%	68.4%	5.4%	43.2%
1:1 (plasma:H2O)	17.2%	56.9%	122.7%	8.0%	87.3%

Matrix effect is reflected by the analyte response in matrix over that in neat solvent

Compound A with IS in rat Plasma

STD Concentration with IS (ng/mL)	5.00	20.0	100	500	1000	2000	5000	10000	20000
1	5.20	*29.3	108	441	945	2250	6070	11300	22200
2	5.00	17.4	78.7	498	921	1680	4740	11000	20200
Mean	5.10	17.4	93.4	470	933	1970	5410	11200	21200
%Bias	2.0	-13.0	-6.6	-6.0	-6.7	-1.5	8.2	12.0	6.0
n	2	1	2	2	2	2	2	2	2

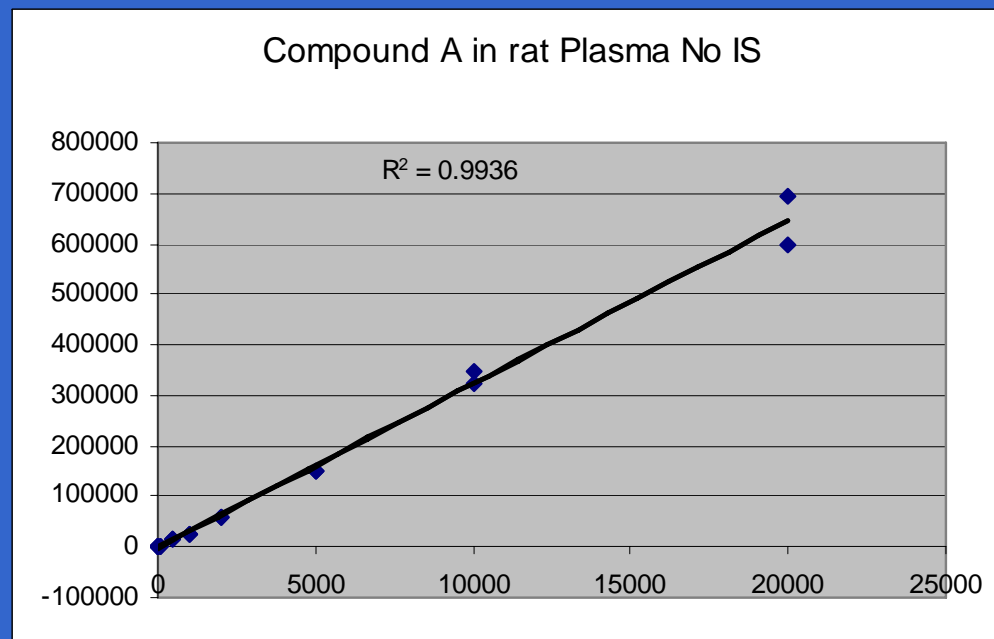
QC concentration (ng/mL)	Low (10.0)	Mid (2500)	High (16000)
1	12.1	2430	17500
2	8.88	2550	17900
3	~16.6	2570	16900
4	11.1	2470	17300
5	12.3	2660	19000
6	10.1	2710	11400
Mean	11.8	2570	16700
%CV	22.5	4.2	16.0
%Bias	18.0	2.8	4.4
n	6	6	6



Compound A without IS in Rat Plasma

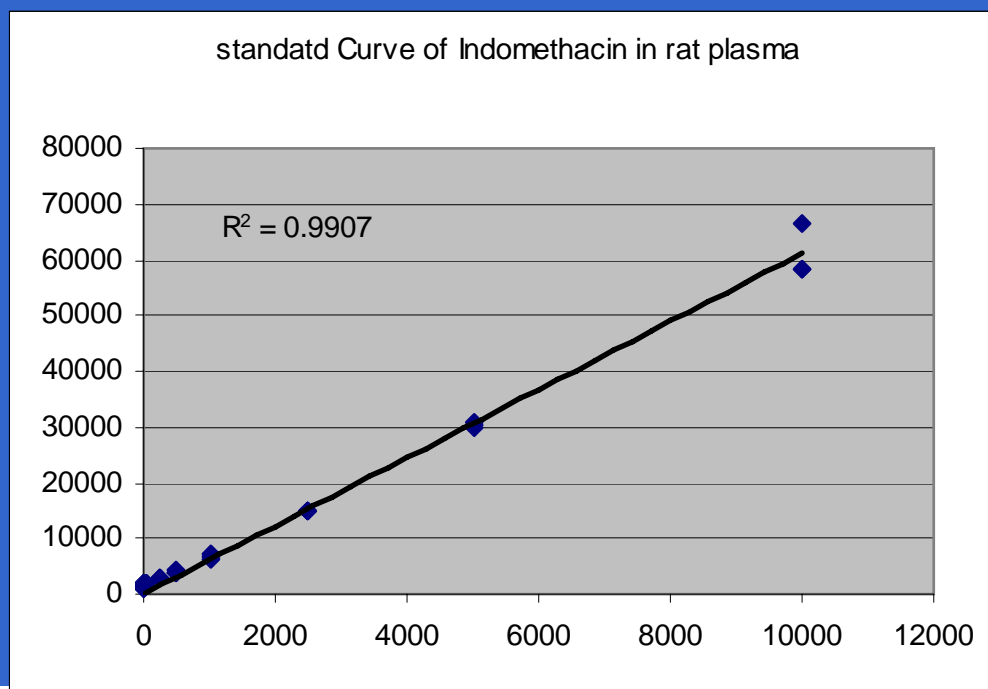
STD Concentration No IS (ng/mL)	5.00	20.0	100	500	1000	2000	5000	10000	20000
1	5.21	26.2	104	486	884	1890	5030	11600	23200
2	4.67	16.1	91.5	449	854	1980	4960	10900	20000
Mean	4.94	21.2	97.8	468	869	1940	5000	11300	21600
%Bias	-1.2	6.0	-2.2	-6.4	-13.1	-3.0	0.0	13.0	8.0
n	2	2	2	2	2	2	2	2	2

QC concentration (ng/mL)	Low (10.0)	Mid (2500)	High (16000)
1	10.4	2650	16300
2	9.33	2370	18500
3	~14.0	2590	15300
4	12.5	2670	18900
5	11.7	2470	17300
6	12.9	2570	13000
Mean	11.8	2550	16600
%CV	14.5	4.5	13.3
%Bias	18.0	2.0	3.8
n	6	6	6



Indomethacin in Rat Plasma

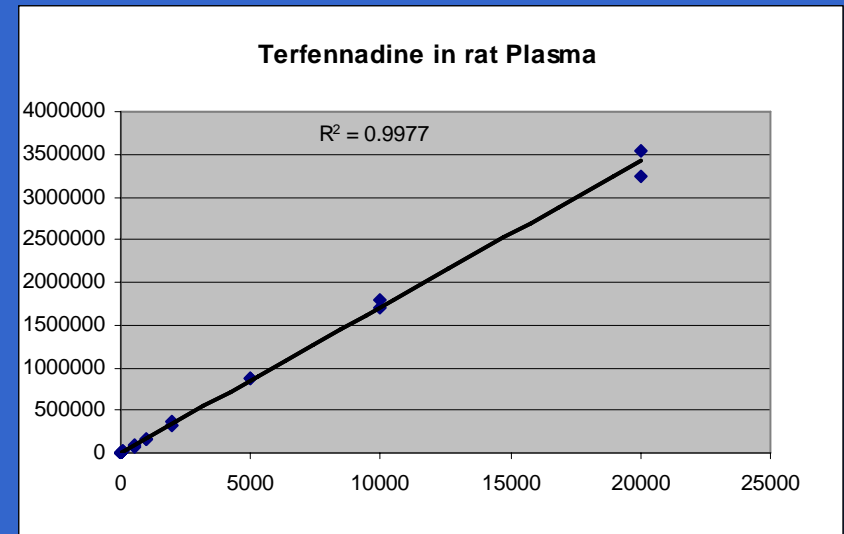
STD Concentration (ng/mL)	10.0	50	250	500	1000	2500	5000	10000
1	8.75	36.1	212	493	999	2510	5550	10800
2	10.6	59.4	253	434	857	2580	5420	10800
3	10.9	52.0	206	427	1050	2560	5360	12400
Mean	10.1	49.2	224	451	969	2550	5440	11300
Mean %Bias	1.0	-1.6	-10.4	-9.8	-3.1	2.0	8.8	13.0
%CV	11.5	24.2	11.4	8.0	10.3	1.4	1.8	8.2
n	3	3	3	3	3	3	3	3



Terfenadine in Rat Plasma

STD concentration (ng/mL)	2.00	5.00	20.0	100	500	1000	2000	5000	10000	20000
1	2.15	4.72	17.7	92.8	457	1050	2270	5280	10400	21500
2	2.01	4.51	19.0	89.7	498	1000	1990	5280	11000	19800
Mean	2.08	4.62	18.4	91.3	478	1030	2130	5280	10700	20700
%Bias	4.0	-7.6	-8.0	-8.7	-4.4	3.0	6.5	5.6	7.0	3.5
n	2	2	2	2	2	2	2	2	2	2

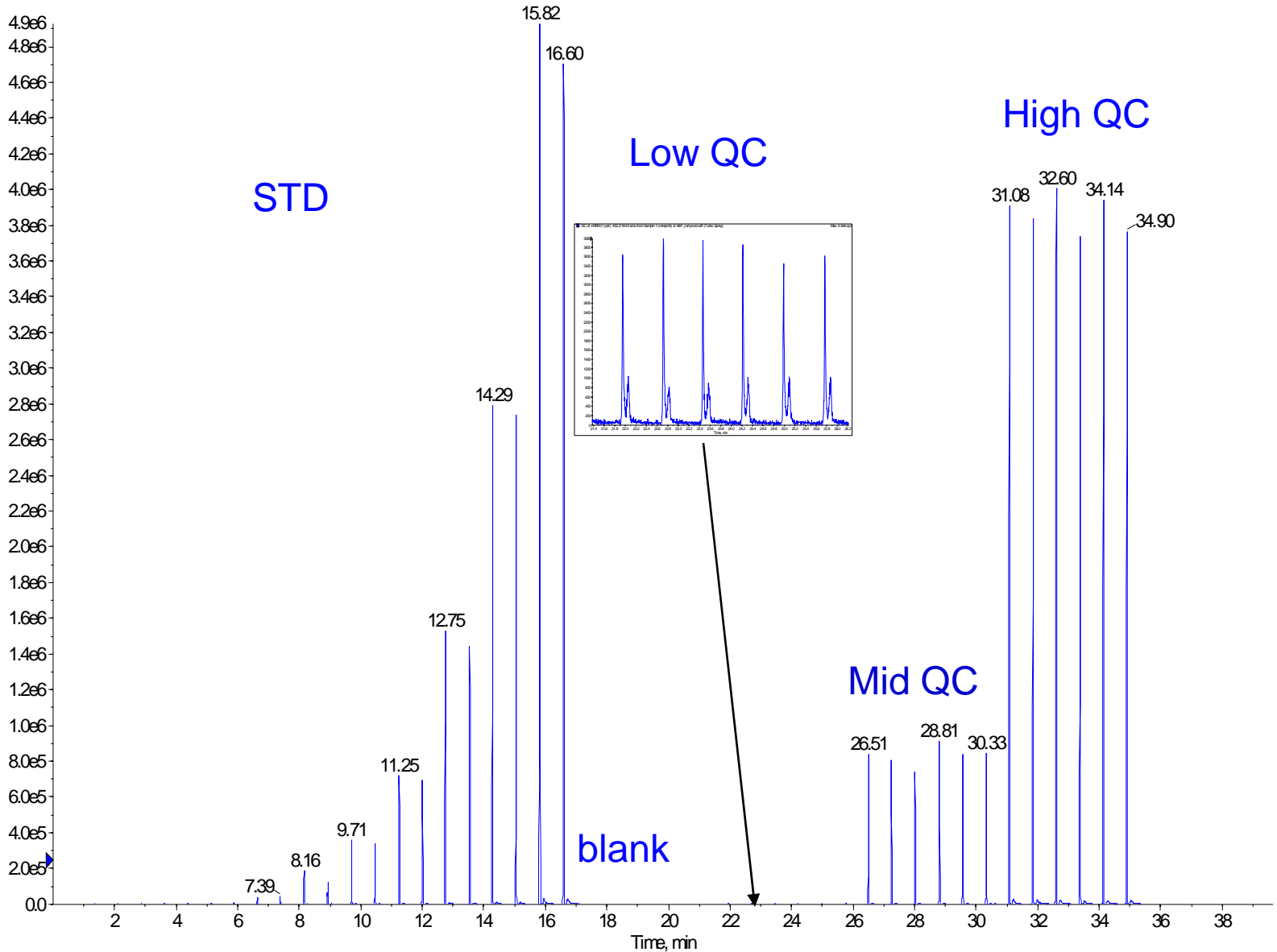
QC Concentration (ng/mL)	Low (10.0)	Mid (2500)	High (16000)
1	9.78	2680	11700
2	9.81	2830	14000
3	9.72	2710	15300
4	9.19	2740	14300
5	8.90	2540	15600
6	9.07	2920	15300
Mean	9.41	2740	14400
%CV	4.3	4.7	10.1
%bias	-5.9	9.6	-10.0
n	6	6	6



Verapamil in Rat Plasma

XIC of +MRM(1 pair): 455.3/164.9 amu from Sample 1 (verapamil) of A&P_caryover.wiff (Turbo Spray)

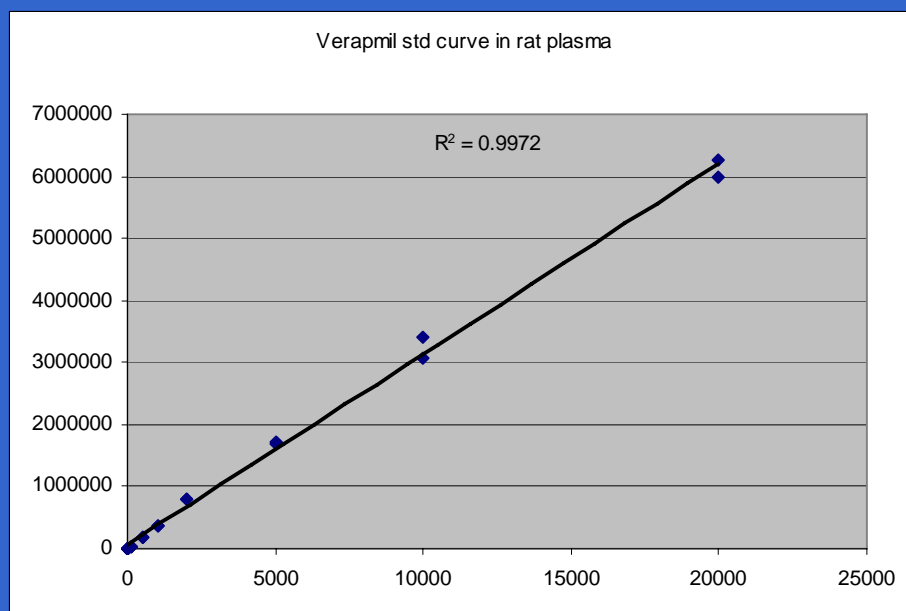
Max. 4.9e6 cps



Verapamil in Rat Plasma

STD concentration (ng/mL)	2.00	5.00	20.0	100	500	1000	2000	5000	10000	20000
1	1.76	6.00	21.1	107	523	993	2160	4600	9330	17100
2	2.04	*7.30	21.9	111	523	1010	2190	4690	8440	16400
Mean	1.90	6.00	21.5	109	523	1000	2180	4650	8890	16800
%Bias	-5.0	20.0	7.5	9.0	4.6	0.0	9.0	-7.0	-11.1	-16.0
n	2	1	2	2	2	2	2	2	2	2

QC Concentration (ng/mL)	Low (10.0)	Mid (2500)	High (16000)
1	9.71	2300	14200
2	10.7	2270	13600
3	7.95	2230	13900
4	8.29	2490	13200
5	7.72	2520	12800
6	9.13	2300	13600
Mean	8.92	2350	13600
%CV	12.9	5.2	3.7
%bias	-10.8	-6.0	-15.0
n	6	6	6



Applications for in Vivo and in Vitro ADME Studies

1. Mouse PK Study for Compound A (plasma samples)
 - 7 groups, 3 animals at 25 mg/kg PO
 - a) Plasma samples were extracted and analyzed by LC/MS/MS
 - b) Plasma samples were directly subjected to DART analysis

Mouse PK Study

Measured Plasma Concentrations By LC/MS/MS & DART

Sample ID	LC/MS /MS Concentration (nM)	DART Concentration (nM)	% MPD
C1 30min	3990	4170	2.2
C2 30min	3930	4412	5.8
C3 30min	2300	2918	11.8
C4 1 hr	3500	4297	10.2
C5 1 hr	4200	5846	16.4
C6 1 hr	2480	3011	9.7
C7 2hr	3500	4430	11.7
C8 2hr	1890	2340	10.6
C9 2hr	2900	3073	2.9
C10 4hr	2940	2674	-4.7
C11 4hr	3480	3672	2.7
C12 4hr	4510	4766	2.8
C13 8hr	3110	2851	-4.3
C14 8hr	1900	2111	5.3
C15 8hr	3270	3130	-2.2
C16 16hr	BQL	BQL	
C17 16hr	2.00	BQL	
C18 16hr	BQL	BQL	
C19 24hr	BQL	BQL	
C20 24hr	BQL	BQL	
C21 24hr	1.39	BQL	

Applications for in Vivo and in Vitro ADME Studies

2. Mouse PK Study for Compound B (whole blood samples)

- 16 groups, 3 animals at 60 mg/kg SC
 - a) Whole blood samples were extracted and analyzed by LC/MS/MS
 - b) Whole blood samples were directly subjected to DART analysis

Mouse PK Study

Measured Whole Blood Concentrations Between LC/MS/MS & DART

Sample ID	LC/MS/MS Concentration (nM)	DART (nM)	%MPD	Sample ID	LC/MS/MS Concentration(nM)	DART (nM)	%MPD
AA1	BQL	BQL		II1	BQL	BQL	
AA2	BQL	BQL		II2	BQL	BQL	
AA3	BQL	BQL		II3	BQL	BQL	
BB1	19300	23271	9.3	JJ1	12900	15927	10.5
BB2	15900	17162	3.8	JJ2	14700	14677	-0.1
BB3	22200	23836	3.6	JJ3	14500	13027	-5.4
CC1	21300	23724	5.4	KK1	17700	16409	-3.8
CC2	24100	19131	-11.5	KK2	18900	22208	8.0
DD3	35700	29939	-8.8	KK3	20200	18168	-5.3
EE1	BQL	BQL		LL1	22400	23978	3.4
EE2	BQL	BQL		LL2	31700	27722	-6.7
EE3	BQL	BQL		LL3	31800	38092	9.0
FF1	20600	19858	-1.8	MM1	BQL	BQL	
FF2	21200	18763	-6.1	MM2	BQL	BQL	
FF3	15500	17434	5.9	MM3	BQL	BQL	
GG1	22300	32876	19.1	NN1	11400	13606	8.8
GG2	21600	20113	-3.6	NN2	16100	14609	-4.9
GG3	23800	24292	1.0	NN3	16000	17126	3.4
HH1	33200	30853	-3.7	OO1	16600	19852	8.9
HH2	44600	28290	22.4	OO2	18100	17639	-1.3
HH3	33200	34187	1.5	PP1	34800	33839	-1.4

Applications for in Vivo and in Vitro ADME Studies

3. Intrinsic Clearance Study for In vitro Samples

	Matrix	Hepatic Extraction Ratio LC/MS/MS	Hepatic Extraction Ratio DART
Compound C	Human S9	<0.19	<0.19
Compound C	Rat S9	<0.16	<0.16
Compound D	Mouse Microsomes	0.91	0.92

Conclusions

- The reproducibility, Sensitivity and Practicability of DART has been significantly improved with new instrumentation.
- DART was found to meet the general requirement for bioanalysis without sample preparation.
- Compared to results generated with LC/MS/MS, DART has produced comparable results for PK and in vitro ADME studies.

Acknowledgements

Gordon Justin, Chuang Lu, Ji Zhang, Cicely Berg, and members of the bioanalytical group for their help in this work.